

Figure 1 Enrollment Rates among Native and Immigrant Men Aged 16-29 by Year

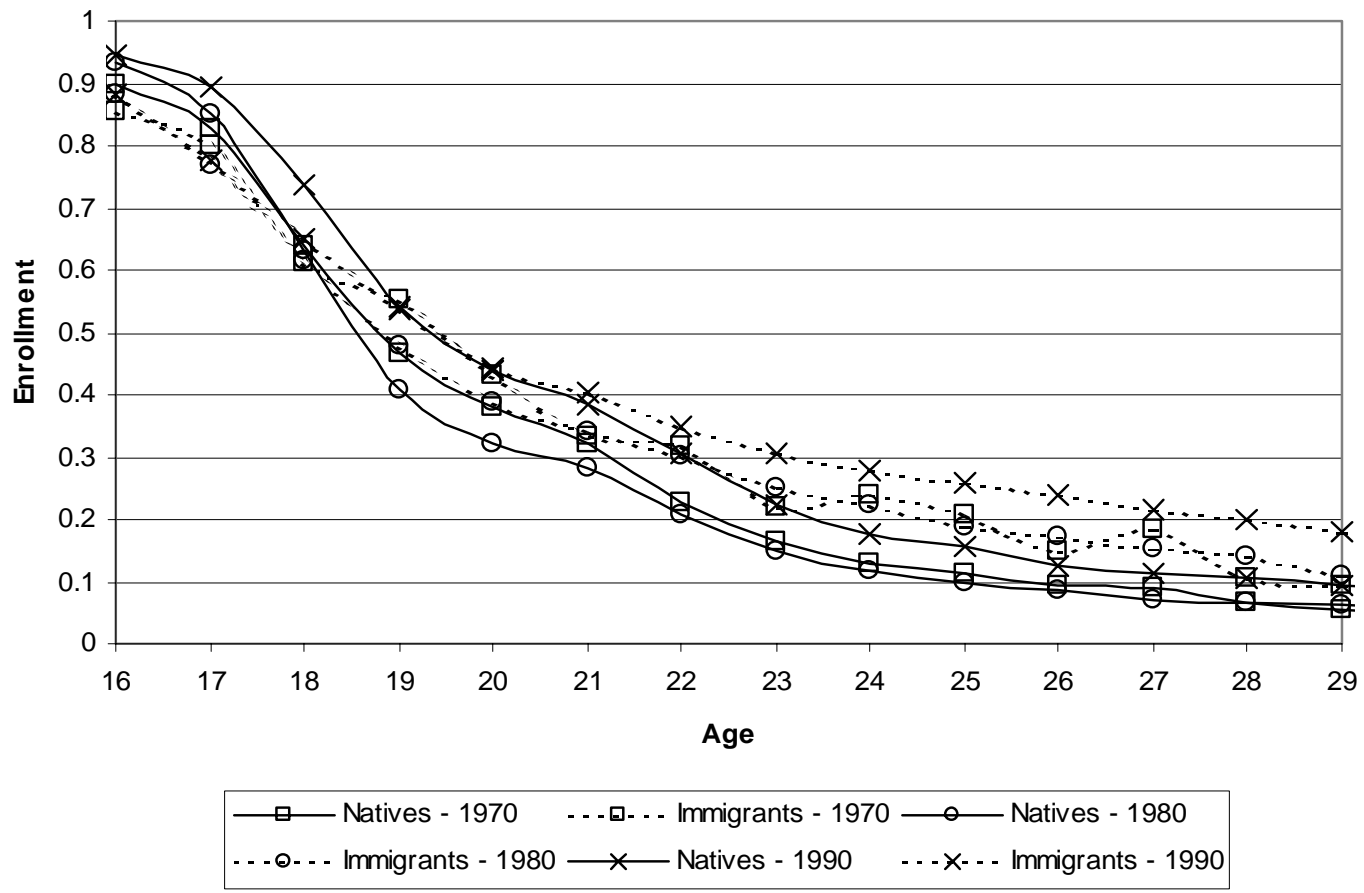


Figure 2 Enrollment Rates among Native and Immigrant Men Aged 30-64 by Year

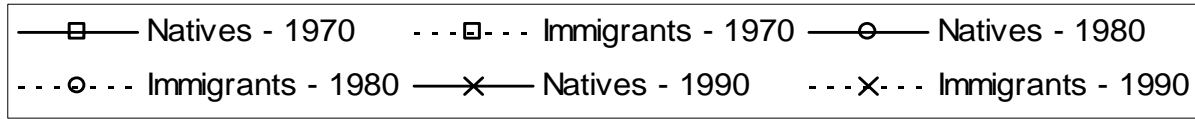
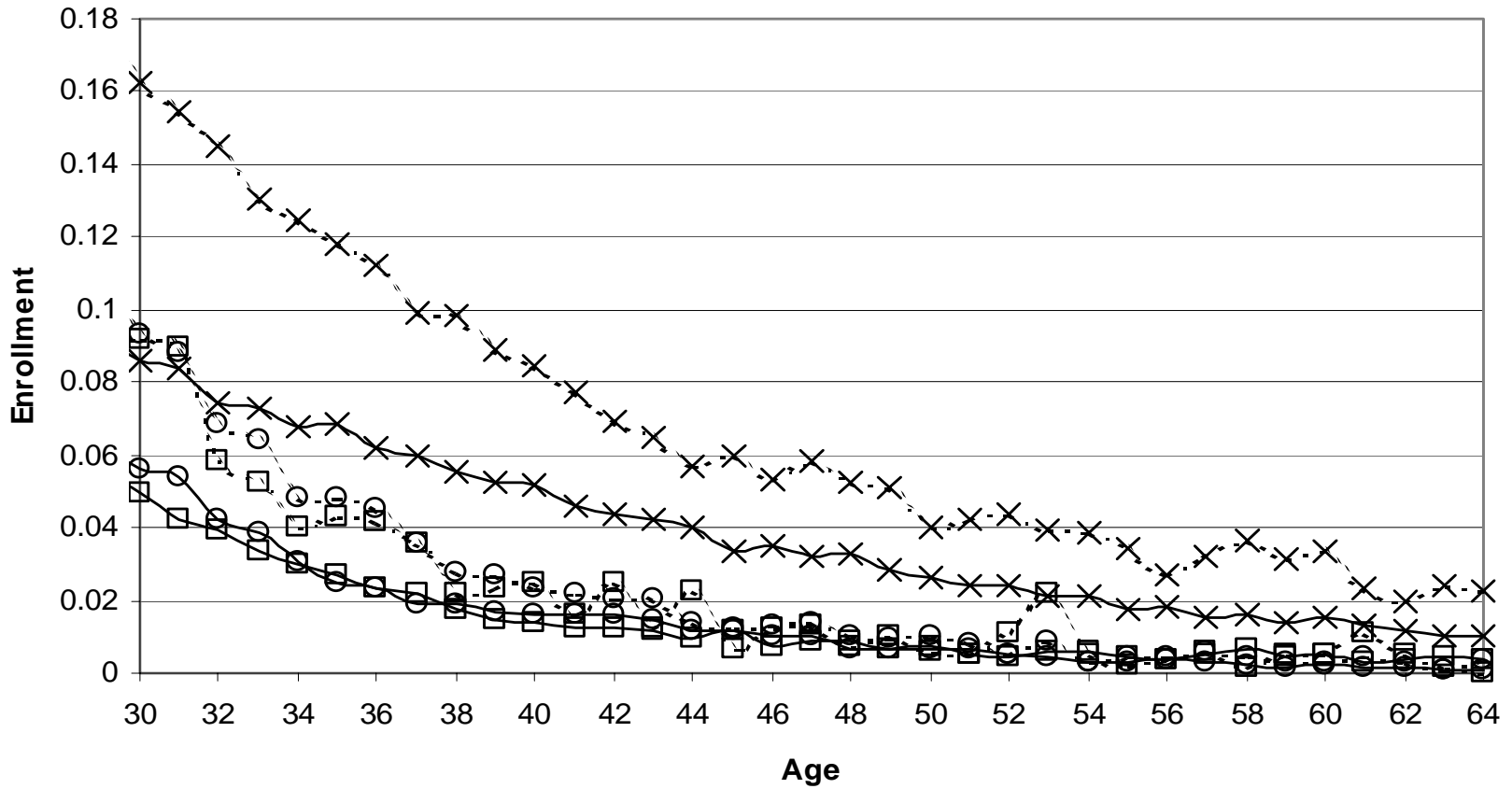


Figure 3 Enrollment Rates in Grades 1-12 and in Post Secondary Education among Native and Immigrant Men Aged 16-29 (Sample Averages over 1970, 1980 and 1990 Censuses)

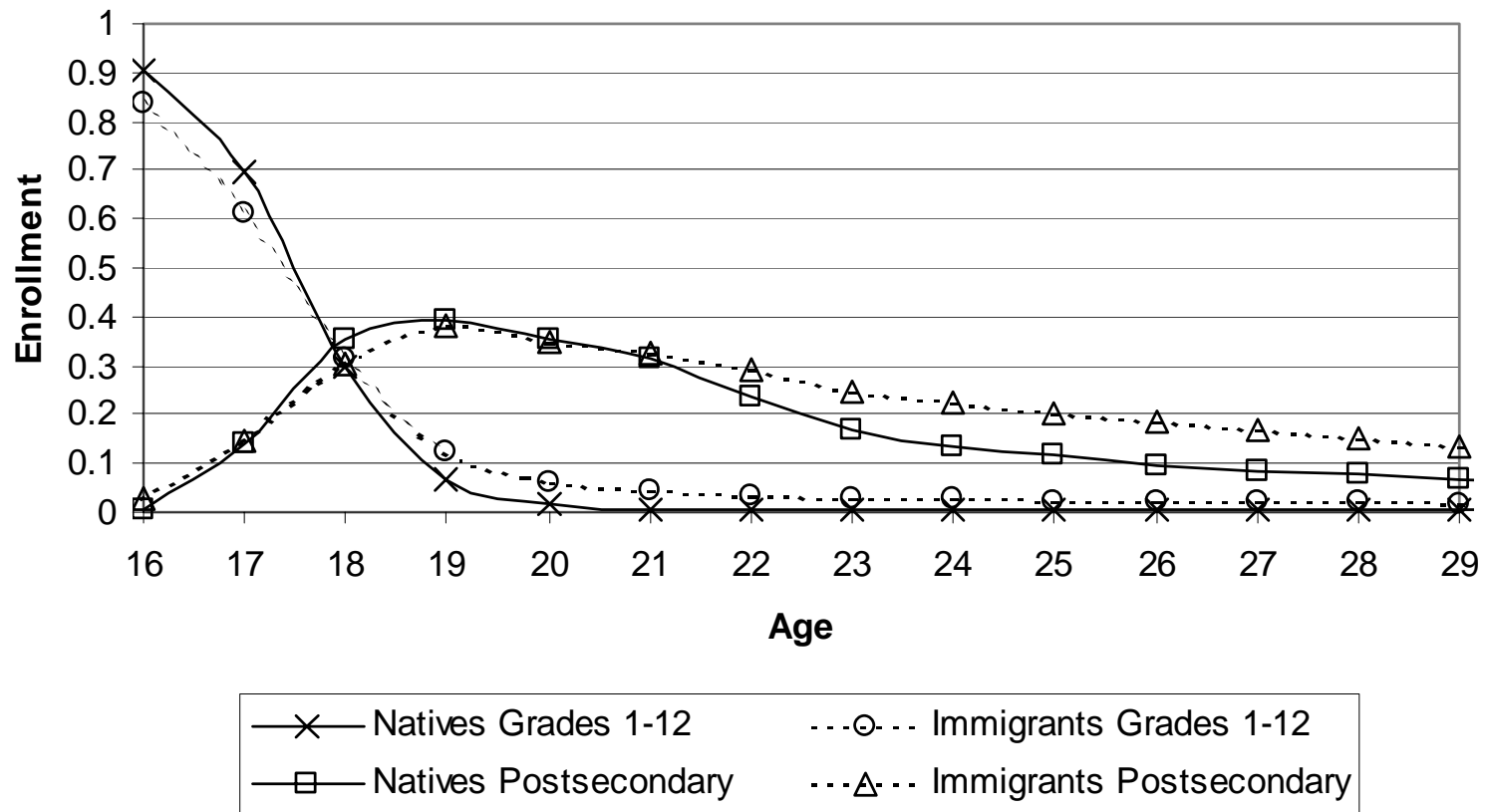


Figure 4 Enrollment Rates in Grades 1-12 and in Post Secondary Education among Native and Immigrant Men Aged 30-64 (Sample Averages over 1970, 1980 and 1990 Censuses)

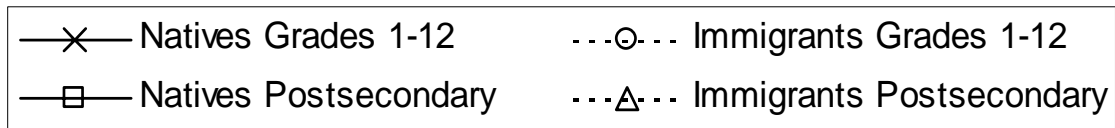
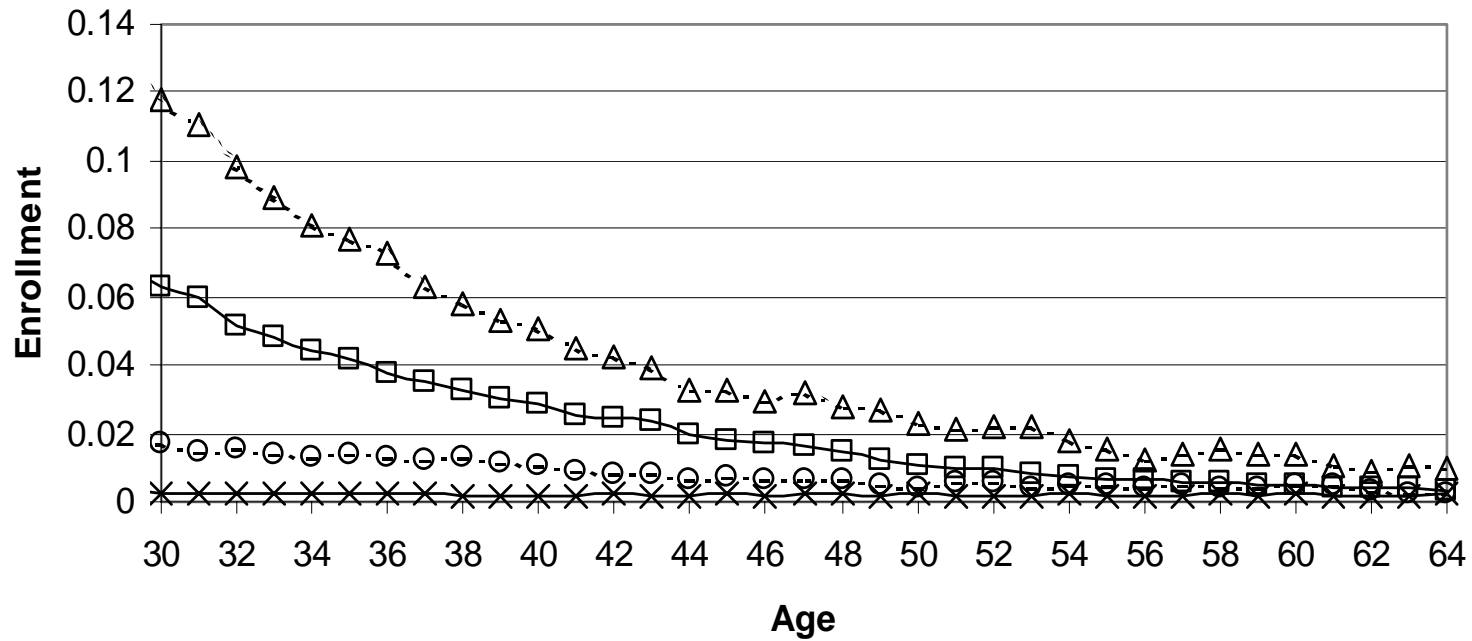


Figure 5 Predicted Difference in Probability of Enrollment in Grade 1-12 between Immigrants and Natives by Immigrant's Age, 1990 Baseline.

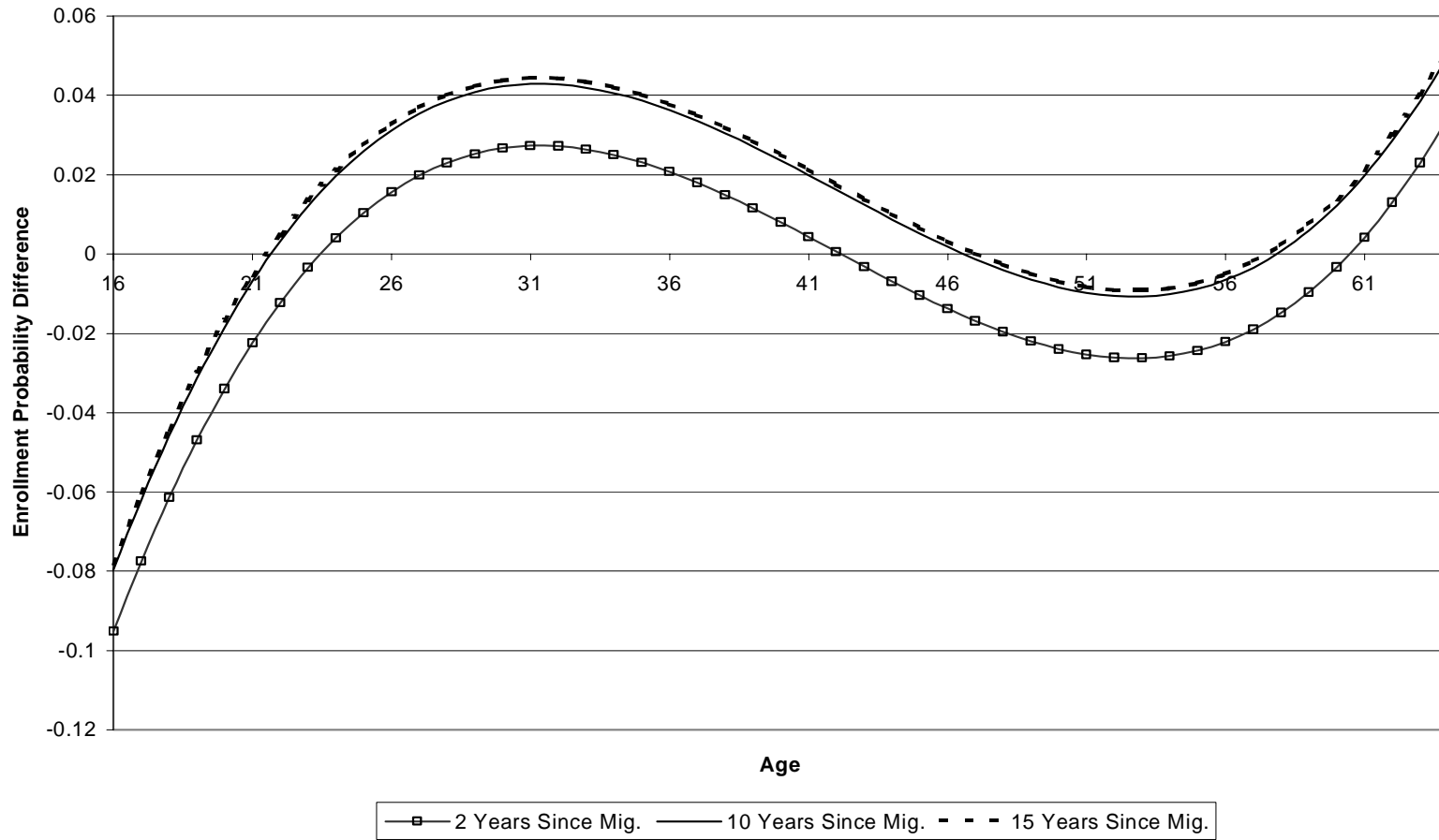


Figure 6 Predicted Difference in Probability of Enrollment in Grade 1-12 between Immigrants and Natives by Years Since Migration, 1990 Baseline.

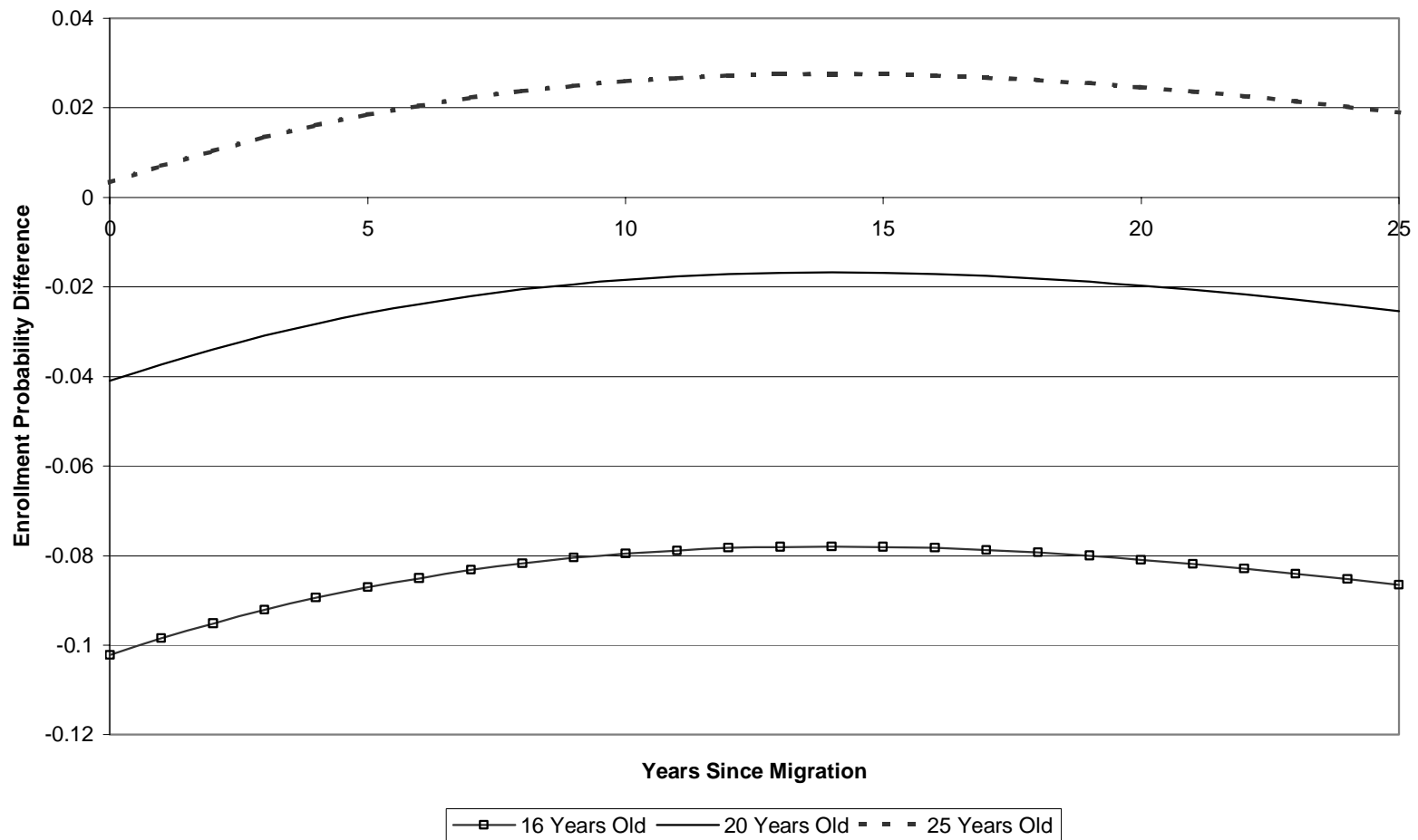


Figure 7 Predicted Difference in Probability of Enrollment in College between Immigrants and Natives by Immigrant's Age, 1990 Baseline.

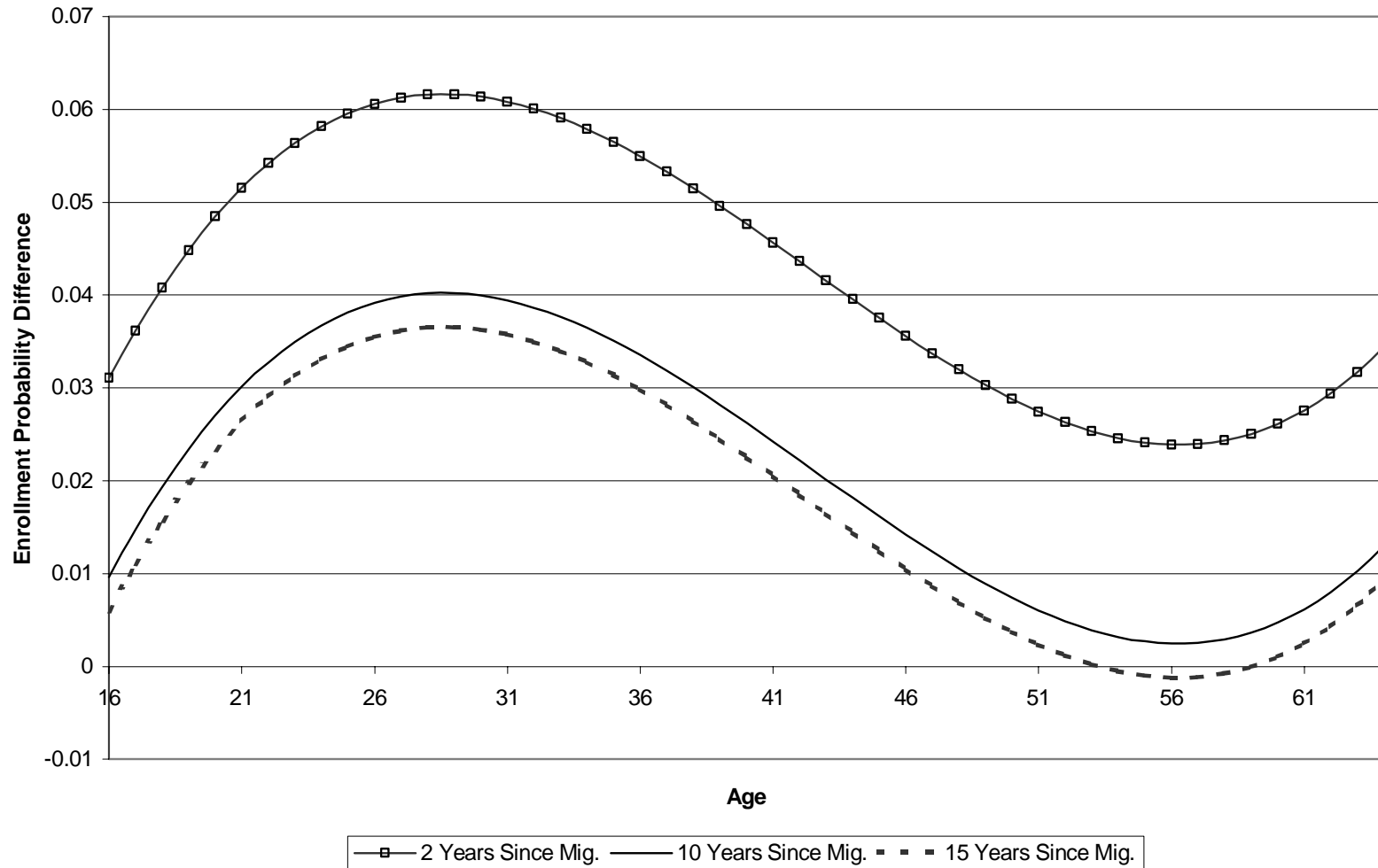


Figure 8 Predicted Difference in Probability of Enrollment in College between Immigrants and Natives by Years Since Migration, 1990 Baseline.

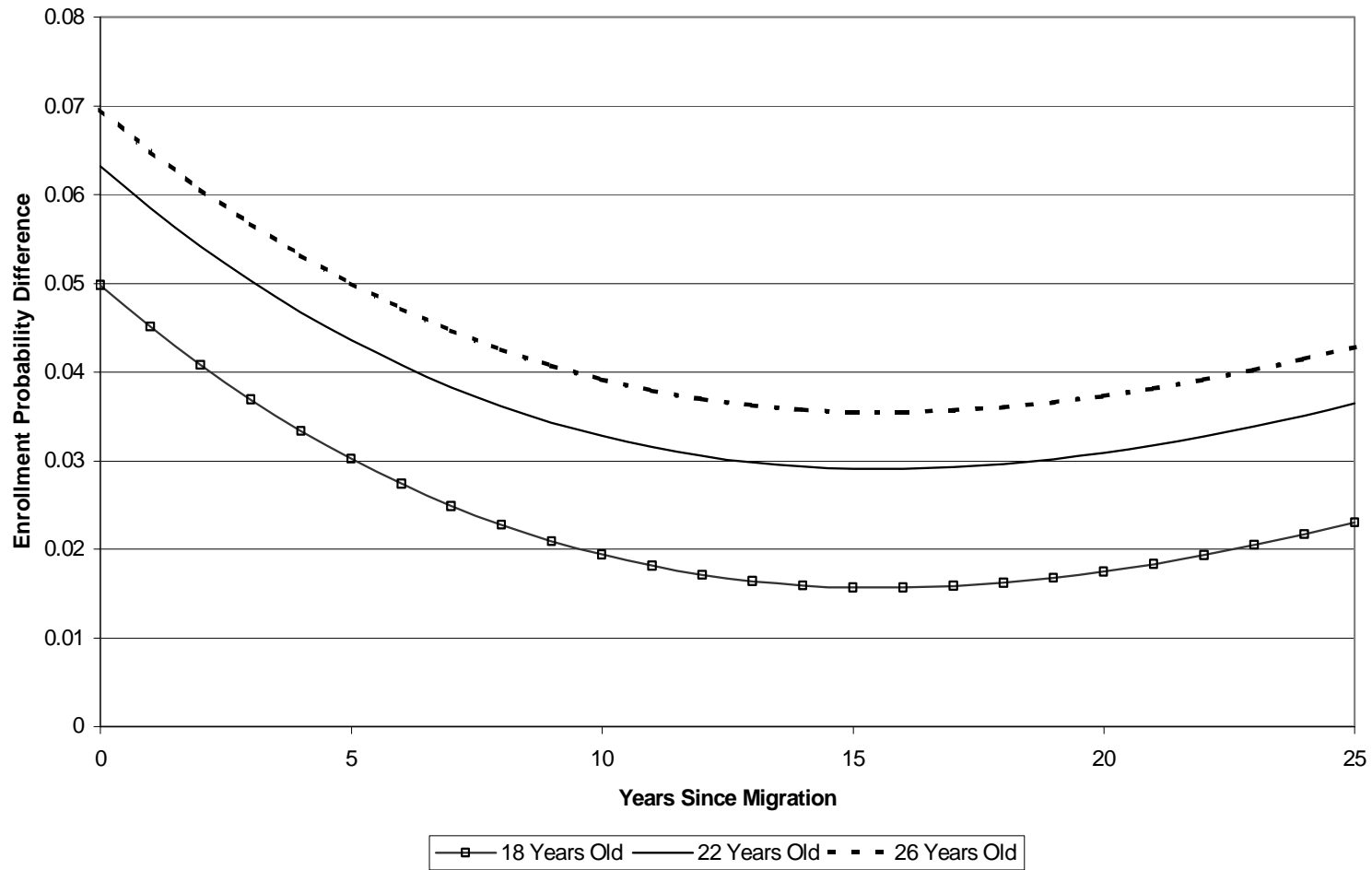


Figure 9 Predicted Difference in Years of Schooling between Natives and Immigrants, by Immigrant's Age and Years Since Migration, 1990 Baseline and 1975-79 Cohort.

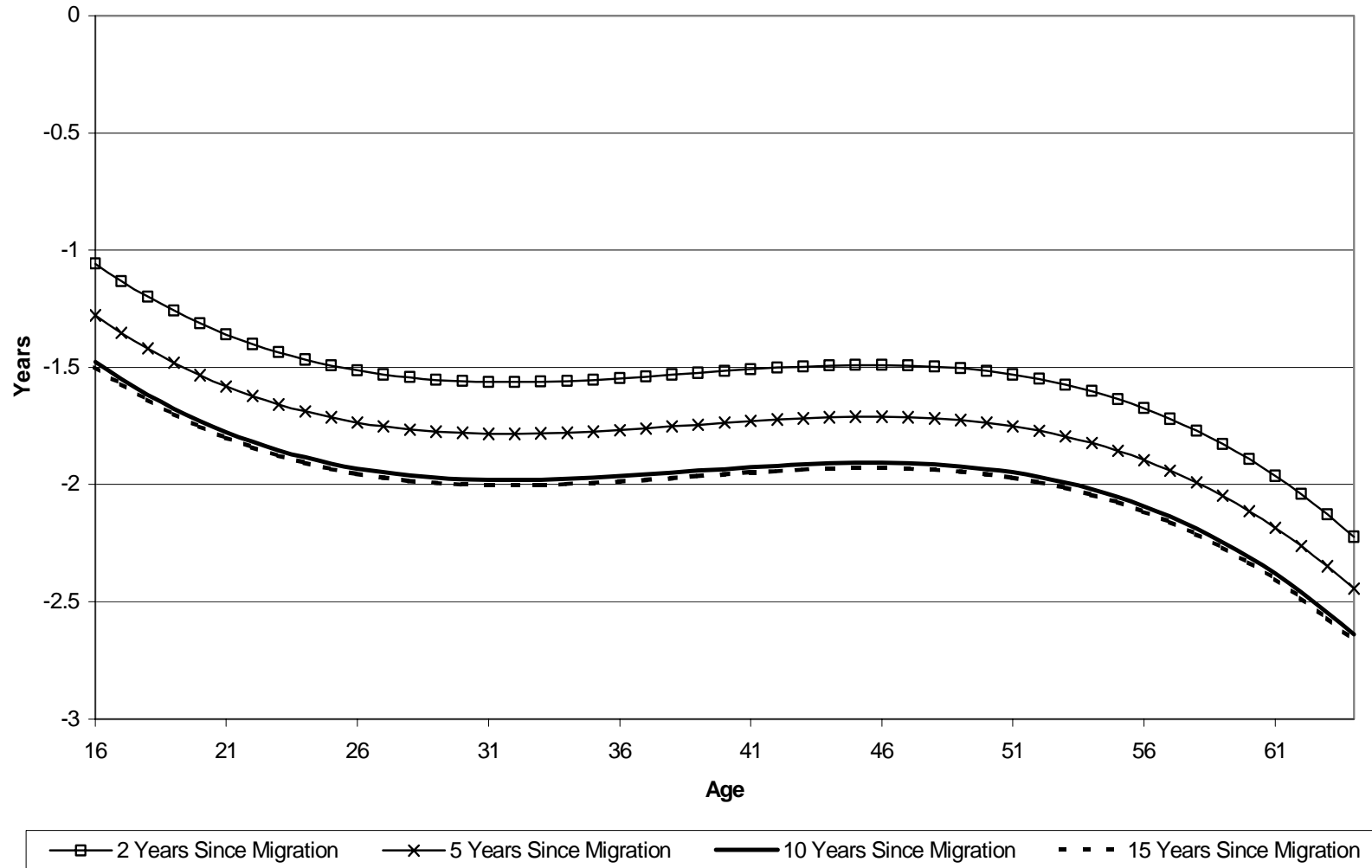


Figure 10 The Predicted Log Wage Gap by Immigrant's Age, without Controls for Education (Solid Lines) and with Controls (Dashed Lines)

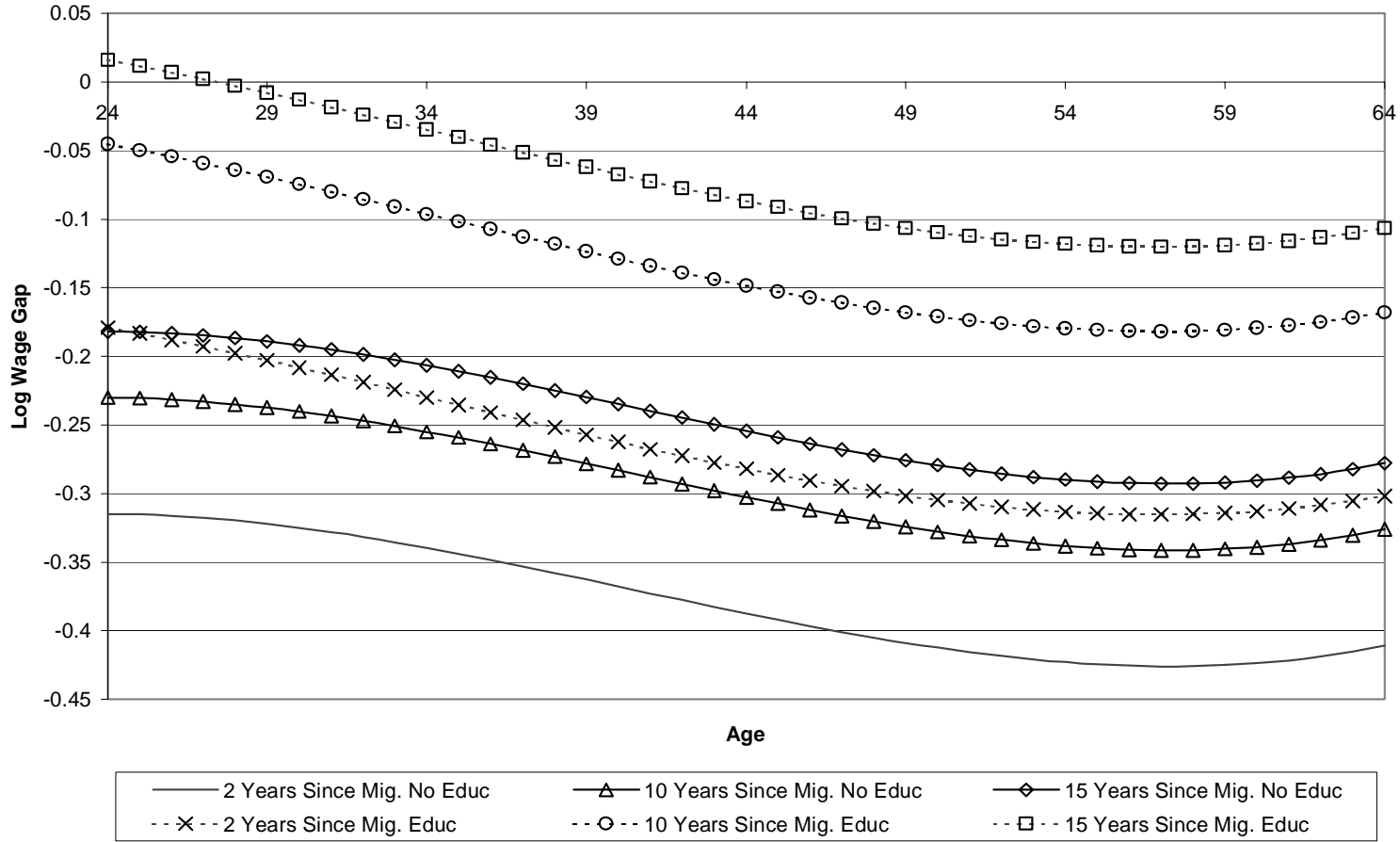


Figure 11 The Predicted Log Wage Gap by Years Since Immigration, without Controls for Education (Solid Lines) and with Controls (Dashed Lines)

